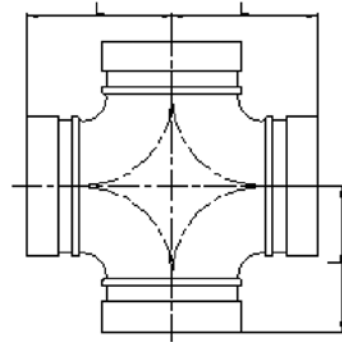


8068

Cross

Gr8LOK by **GRUVLOK**



MATERIAL SPECIFICATIONS

CAST FITTINGS:

Ductile Iron conforming to ASTM A-536

FINISH:

Rust inhibiting paint – Color: Red (standard)

Hot Dipped Zinc Galvanized conforming to ASTM A-153 (optional)

For other coating requirements contact an Anvil Representative.

Nominal Size mm/in	Pipe O.D. mm/in	Max. Working Pressure MPa/PSI	Dimensions L mm/in
32 1 ¹ / ₄	42.4 1.669	3.45 500	70.0 2.75
40 1 ¹ / ₂	48.3 1.900	3.45 500	70.0 2.75
50 2	60.3 2.375	3.45 500	70.0 2.75
65 2 ¹ / ₂	73.0 2.875	3.45 500	76.0 3.00
65 2 ¹ / ₂	76.1 3.000	3.45 500	76.0 3.00
80 3	88.9 3.500	3.45 500	85.5 3.37
100 4	108.0 4.250	3.45 500	101.0 3.98
100 4	114.3 4.500	3.45 500	101.0 3.98
125 5	139.7 5.500	3.45 500	124.0 4.88
125 5	141.3 5.563	3.45 500	124.0 4.88
150 6	159.0 6.250	3.45 500	140.0 5.50
150 6	165.1 6.500	3.45 500	140.0 5.50
150 6	168.3 6.625	3.45 500	140.0 5.50
200 8	219.1 8.625	3.45 500	175.0 6.89
250 10	273.0 10.750	3.45 500	229.0 9.00
300 12	323.9 12.750	3.45 500	254.0 10.00